



# BABCOCK RANCH

*Live a better life*

### LEGEND

- CIVIC/COMMERCIAL BUILDINGS
- RESIDENTIAL
- FUTURE RESIDENTIAL
- MIXED USE
- WETLANDS
- SOLD OUT
- NEIGHBORHOOD TRAIL
- FUTURE TRAIL
- TRAILHEAD

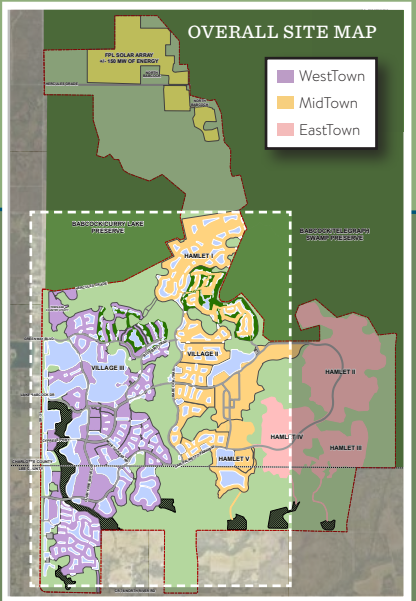


Looking For More Adventure?

View our Trails Map for more ways to explore Babcock Ranch.

©2023 KITSON & PARTNERS. ALL RIGHTS RESERVED. PHOTOGRAPHS AND MAPS ARE FOR ILLUSTRATIVE PURPOSES ONLY AND ARE NOT INTENDED TO BE AN ACTUAL REPRESENTATION OF A SPECIFIC COMMUNITY, NEIGHBORHOOD, OR ANY COMPLETED IMPROVEMENTS BEING OFFERED. THIS MATERIAL SHALL NOT CONSTITUTE A VALID OFFER IN ANY STATE WHERE PRIOR REGISTRATION IS REQUIRED OR IF VOID BY LAW. DEVELOPER RESERVES THE RIGHT TO CHANGE INFORMATION WITHOUT NOTICE. ALL PRICES, SPECIFICATIONS, AND PLANNED AMENITIES ARE SUBJECT TO CHANGE WITHOUT NOTICE.

ORAL REPRESENTATIONS CANNOT BE RELIED UPON AS CORRECTLY STATING REPRESENTATIONS OF THE DEVELOPER. FOR CORRECT REPRESENTATIONS, MAKE REFERENCE TO THE DOCUMENTS REQUIRED BY SECTION 718.503, FLORIDA STATUTES, TO BE FURNISHED BY A DEVELOPER TO A BUYER OR LESSEE.



CHARLOTTE COUNTY  
LEE COUNTY

CHARLOTTE COUNTY  
LEE COUNTY