

**TEMPORARY TRAIL MAP**  
 Sections of trails will be closed temporarily to accommodate construction activity. The Babcock Ranch Residential Association will continue to provide updates on closures and advise on where users should access trails.



# HIT THE TRAILS

## CHOOSE YOUR TERRAIN

TEMPORARILY CLOSED DUE TO CONSTRUCTION ACTIVITY

### CONCRETE PATH

- Curry Preserve Drive 1.50 miles
- Lake Babcock Drive 1.20 mile
- Cypress Parkway 1.75 miles
- Bluebird Trail 1.28 miles
- Telegraph Park .51 miles
- Founder's Walkway .50 miles
- Lake Bullhorn Park .25 miles

### SHELL PATH

- Dick Cuda Trail 2 miles

### NATURAL PATH

- Chain of Lakes Trail 1.85 miles
- Jack Peeples Park .36 miles

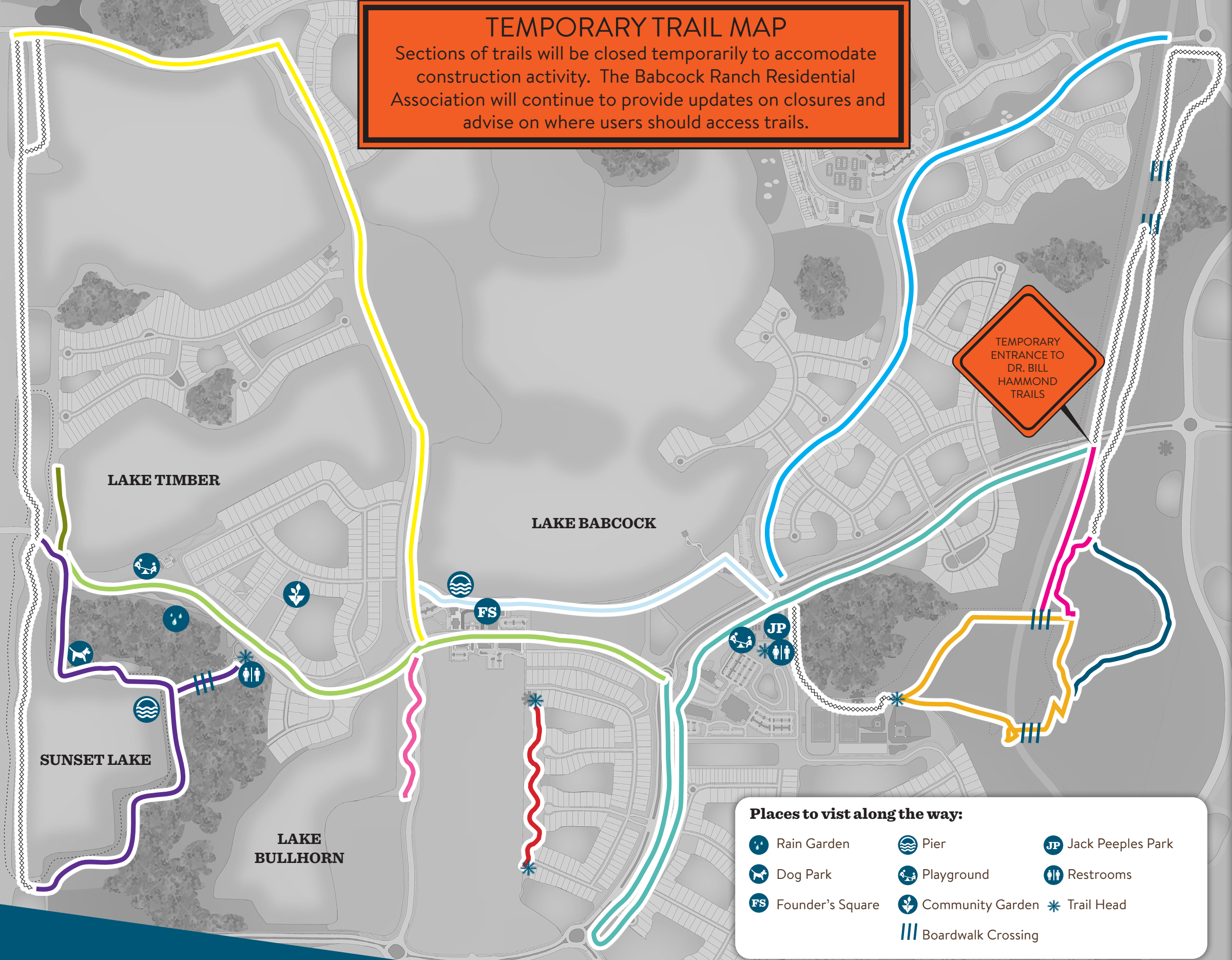
### BILL HAMMOND TRAILS

- Curry Canal Trail 2.21 miles
- Palmetto Path .79 mile
- Wetland Loop 1 mile

## DID YOU KNOW?

**50%** OF THE LAND (9,000 ACRES)

DEDICATED TO NATURAL GREENWAYS, PARKS & LAKES



**Places to visit along the way:**

Rain Garden	Pier	Jack Peeples Park
Dog Park	Playground	Restrooms
Founder's Square	Community Garden	Trail Head
Boardwalk Crossing		